

FT-980 starts up using com port 1. To use a different port pass it on the target line in the shortcut (Ft980.Exe 2 or FT-980 3, etc.) Since I wrote it for my use there is no manual or config section but it pretty easy and I'll answer any questions. If there is enough interest I'll write a user's guide. Let me know what you like or don't like but remember it's just a hobby for me.

Run the setup

Run the FT-980 (with port if needed)

Click "Connect to FT-980" If the connection is okay you will see the frequency on the screen that matched the radio.

** Don't over click or you will over run the buffer.

If that happens click "Break" and the buffer will settle in a few seconds. The green light in the top right corner of the display indicates buffer activity

The number keys can be used to control the scanning

Enter can start and stop the scan

Up and down change direction and move 1.0 kc

Right and Left change direction and move 0.1 kc

A simple wireless numeric pad used for laptops works great for this with the advantage of a smaller keypad.

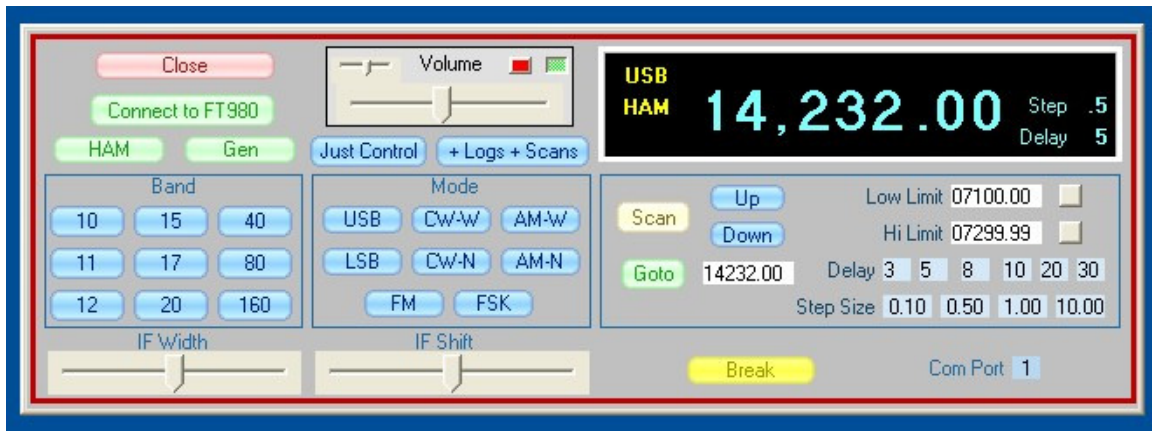
There are 3 databases, Logs, Saved Scans and Digital Standards. Click on the frequencies in any of them to go to that freq, double click elsewhere to edit that entry.

I usually run Digital Master with this for SSTV, PSK31, RTTY and CW.

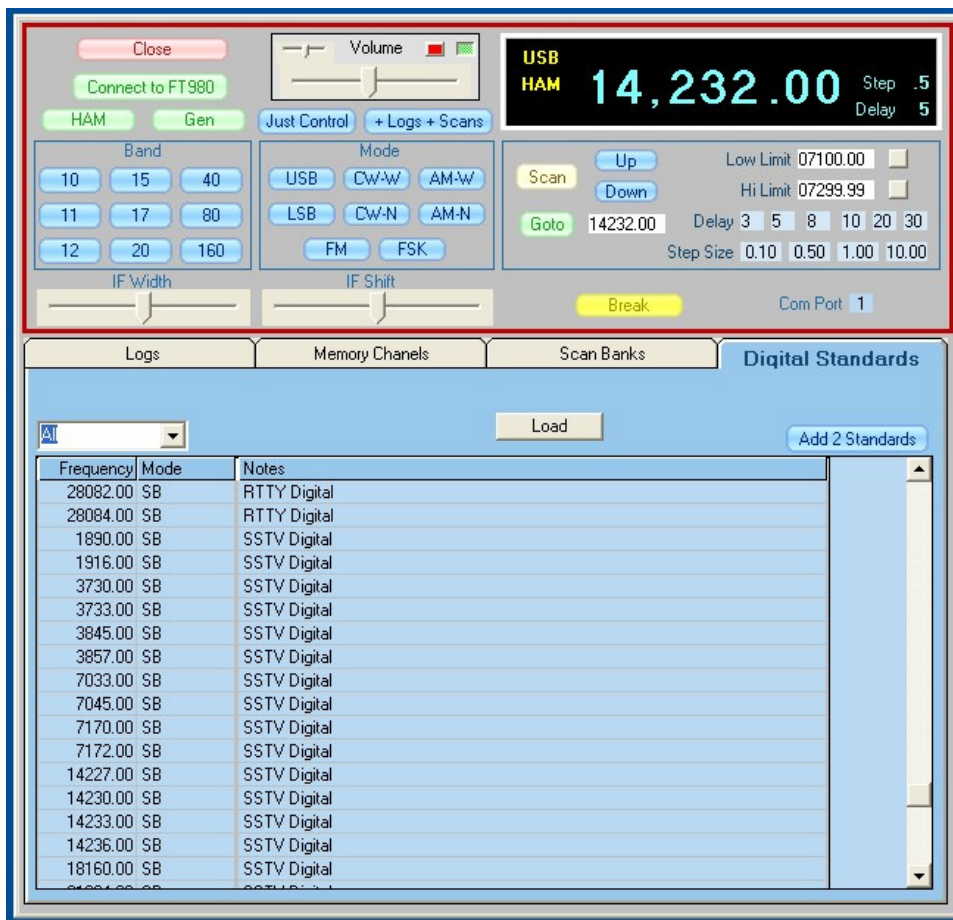
Enjoy,

Mike Morris Sr.

Most of the controls match the radio so it's easy to get used to.



"Just Controls" is a shortened view just to control the radio



" + Logs + Scans " displays the controls and databases